



Media Release

Date: July 19, 2024

For immediate release

RDCK Evacuation Order issued due to Aylwin Creek Wildfire

Nelson, BC: On the recommendation of the BC Wildfire Service (BCWS), the Regional District of Central Kootenay (RDCK) Emergency Operations Centre (EOC) has issued an Evacuation Order for 107 properties south of the Village of Silverton in the Red Mountain Road area, East of Slocan Lake, near the Highway 6 corridor. This is in addition to the previously evacuated properties west of Hwy 6. See map of the Evacuation Order area below.

Evacuation Order covers the following addresses:

8550 CEDAR DR	8909 HIGHWAY 6	8177 OMA RD
8560 CEDAR DR	8921 HIGHWAY 6	8180 OMA RD
7912 HIGHWAY 6	8926 HIGHWAY 6	8186 OMA RD
7914 HIGHWAY 6	8941 HIGHWAY 6	8195 OMA RD
7916 HIGHWAY 6	8942 HIGHWAY 6	8196 OMA RD
7918 HIGHWAY 6	8953 HIGHWAY 6	8019 RED MOUNTAIN RD
7923 HIGHWAY 6	8961 HIGHWAY 6	8020 RED MOUNTAIN RD
8150 HIGHWAY 6	9089 HIGHWAY 6	8046 RED MOUNTAIN RD
8651 HIGHWAY 6	9150 HIGHWAY 6	8070 RED MOUNTAIN RD
8656 HIGHWAY 6	9155 HIGHWAY 6	8088 RED MOUNTAIN RD
8670 HIGHWAY 6	9185 HIGHWAY 6	8095 RED MOUNTAIN RD
8749 HIGHWAY 6	9191 HIGHWAY 6	8099 RED MOUNTAIN RD
8751 HIGHWAY 6	9191 HIGHWAY 6	8102 RED MOUNTAIN RD
8755 HIGHWAY 6	9191 HIGHWAY 6	8112 RED MOUNTAIN RD
8760 HIGHWAY 6	9195 HIGHWAY 6	8141 RED MOUNTAIN RD
8788 HIGHWAY 6	8010 LWR GALENA FARM RD	8150 RED MOUNTAIN RD
8821 HIGHWAY 6	8012 LWR GALENA FARM RD	8157 RED MOUNTAIN RD
8822 HIGHWAY 6	8014 LWR GALENA FARM RD	8164 RED MOUNTAIN RD
8851 HIGHWAY 6	8016 LWR GALENA FARM RD	8165 RED MOUNTAIN RD
8876 HIGHWAY 6	8018 LWR GALENA FARM RD	8173 RED MOUNTAIN RD
8905 HIGHWAY 6	8021 LWR GALENA FARM RD	8201 RED MOUNTAIN RD
8906 HIGHWAY 6	8171 OMA RD	8230 RED MOUNTAIN RD

8235 RED MOUNTAIN RD
8237 RED MOUNTAIN RD
8241 RED MOUNTAIN RD
8250 RED MOUNTAIN RD
8277 RED MOUNTAIN RD
8296 RED MOUNTAIN RD
8297 RED MOUNTAIN RD
8310 RED MOUNTAIN RD
8321 RED MOUNTAIN RD
8370 RED MOUNTAIN RD
8383 RED MOUNTAIN RD
8391 RED MOUNTAIN RD
8407 RED MOUNTAIN RD
8413 RED MOUNTAIN RD

8418 RED MOUNTAIN RD
8425 RED MOUNTAIN RD
8428 RED MOUNTAIN RD
8446 RED MOUNTAIN RD
8449 RED MOUNTAIN RD
8465 RED MOUNTAIN RD
8470 RED MOUNTAIN RD
8473 RED MOUNTAIN RD
8479 RED MOUNTAIN RD
8494 RED MOUNTAIN RD
8497 RED MOUNTAIN RD
8503 RED MOUNTAIN RD
8521 RED MOUNTAIN RD
8522 RED MOUNTAIN RD

8526 RED MOUNTAIN RD
8527 RED MOUNTAIN RD
8530 RED MOUNTAIN RD
8545 RED MOUNTAIN RD
8559 RED MOUNTAIN RD
8576 RED MOUNTAIN RD
8580 RED MOUNTAIN RD
8590 RED MOUNTAIN RD
8595 RED MOUNTAIN RD
8596 RED MOUNTAIN RD
8067 UPPER GALENA FARM RD
8075 UPPER GALENA FARM RD
8085 UPPER GALENA FARM RD

Residents and Visitors are required to leave the Evacuation Order area immediately. Evacuated residents are asked to go to their pre-arranged emergency locations. Register for Emergency Support Services (ESS) in person located at the Kaslo & District Arena Association at 517 Arena Avenue in the Village of Kaslo **OR** register online at <https://ess.gov.bc.ca/> or by calling: 1-800-387-4258.

For further assistance you can call the RDCK EOC public inquiry line at 250.352.7701.

ESS may not be able to accommodate your pets, so make sure you have prepared your pets by having appropriate cages, food, water and bowls, and ensure they are wearing identification. You may wish to arrange to have your pets cared for by family or friends.

Access to the Evacuation Order area is being controlled. You will not be permitted to return to your home during the Evacuation Order unless it is safe to do so and you have been given permission by local officials and emergency personnel.

The Aylwin Creek wildfire was first discovered on July 18, 2024 and is currently estimated at 10 hectares. The BCWS has determined the cause to be lightning.

Updates or changes to the Evacuation Order will be provided via the [RDCK website](#), [Facebook](#) and [X \(formerly Twitter\)](#) as more information becomes available. For details about evacuation and emergency preparedness, along with other resources, please visit www.rdck.ca/eocinfo. The RDCK EOC public inquiry line is 250.352.7701.

For up to date information on current wildfire activity, conditions and prohibitions, call 1.888.336.7378 or visit www.bcwildfire.ca.

For more information about evacuations and emergency preparedness, along with other resources:

- [Current RDCK Evacuation Alerts, Orders and Rescinds](#) or call 250.352.7701
- [Sign up for RDCK Emergency Notification System to receive notifications](#)
- [RDCK web map](#)
- [Public weather alerts for BC from Environment Canada](#)

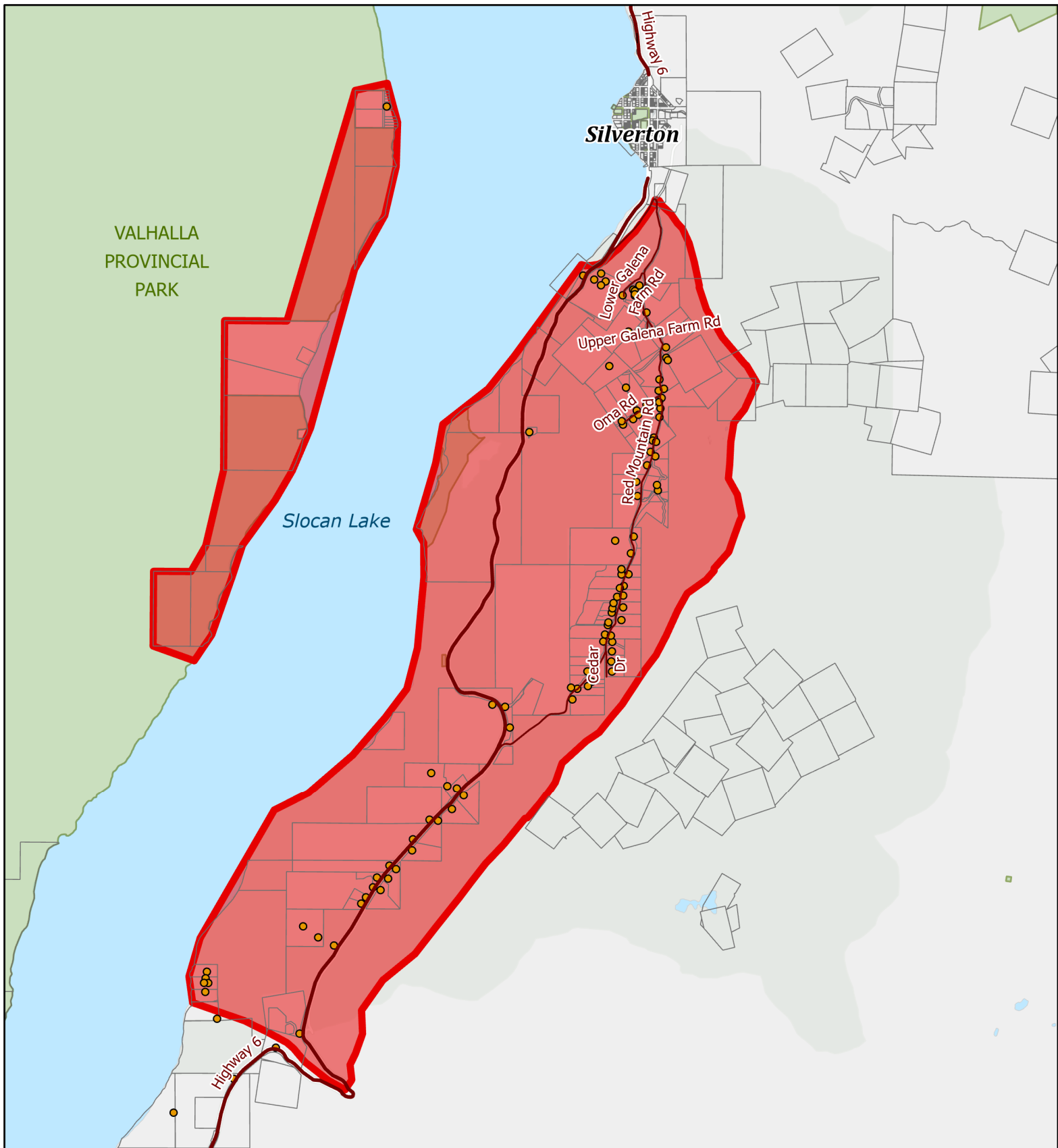
- [BC Wildfire – Interactive Map of Current Events](#)
- [Fortis BC Outage Map](#) or call 1.866.436.7847
- [BC Hydro outage map](#) or call 1.800.224.9376
- [Nelson Hydro](#) 1.877.324.9376
- [Drive BC](#) for highway closures and road conditions
- [For BC Air Quality Health Index](#)
- [Prepared BC](#)

Incorporated in 1965, the Regional District of Central Kootenay (RDCK) is a local government that serves 60,000 residents in 11 electoral areas and nine member municipalities. The RDCK provides more than 160 services, including community facilities, fire protection and emergency services, grants, planning and land use, regional parks, resource recovery and handling, transit, water services and much more. For more information about the RDCK, visit www.rdck.ca.

-30-

For media enquiries:

EOC Information Officer
Regional District of Central Kootenay
Tel: 250.352-7701
Email: eocinfo@rdck.bc.ca



**REGIONAL DISTRICT OF
CENTRAL KOOTENAY
EMERGENCY
OPERATIONS CENTRE**

EOC Phone: 250-352-7701 or 1-866-522-7701

Current Emergency Information:

rdck.ca/EOCinfo







Register to receive emergency notifications:

rdck.ca/notifications

To report a flood, landslide, spill or other hazards:

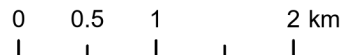
1-800-663-3456

Aylwin Creek Wildfire Evacuation Order

-  Evacuation Order
-  Highway
-  Road
-  Legal Parcels
-  Electoral Areas
-  Civic Address selection

Date: 7/19/2024

Map Scale: 1:55,000



N



The mapping information shown are approximate representations and should only be used for reference purposes. The Regional District of Central Kootenay is not responsible for any errors or omissions on this map.